

What can I put in my trash cart?

Most household items can go into your trash cart as long as they fit. However, there are some things that just don't belong.

Here are some things to keep in mind:



- Bag ALL trash, including yard waste.



- No Hazardous or Medical Waste.
This is a serious violation.



- No liquids

Not sure if an item is trash, can be recycled or even know what to do with it?



**DOWNLOAD
OUR APP!**



Search
Southern Oregon Sanitation



Use our Waste Wizard, an easy to use waste directory. Type in the item and see where it should go!
Or you can visit our website at
sosanitation.com



A GREENER CHOICE:

Sign up today to receive paperless statements or set up automatic payments. It helps conserve valuable resources, lowers administrative costs and can save you time and money.



We encourage you to recycle when ever you can. By recycling, it means less is going into the landfill and you can save money by using a smaller cart for your trash service.



Southern Oregon Sanitation Inc.

P.O. Box 6000 • Grants Pass, OR 97527

www.sosanitation.com

541-479-5335 • recycling@sosanitation.com

Curbside Trash Service Guide



Offering solutions for curbside service



Southern Oregon Sanitation Inc.

What you need to know.

Never miss a pickup!



Our routes start very early and we cannot guarantee a service time. Ensure your cart(s) are set out the night before your scheduled service.

Need a helpful reminder?

Just download our free mobile app for all of this and more!

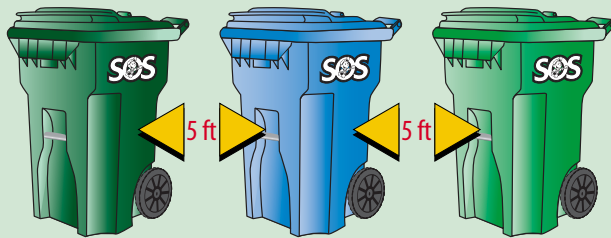
- Service Day Reminders
- Service Alerts
- Pay your Bill
- Submit a Question

Available on



Cart placement

Carts need to be placed 5 feet away from any object or other carts, allowing clearance for the mechanical arm of the collection truck.



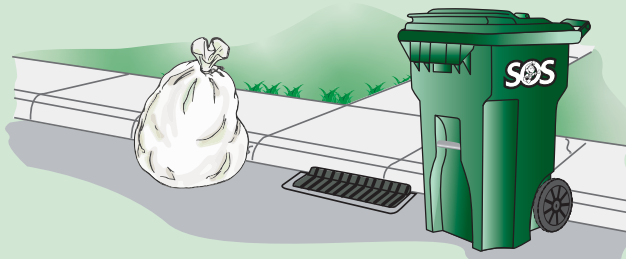
Too much to fit?



- The cart's lid should be completely closed on your service day.
- Do not stuff the cart as this will prevent your cart from emptying completely.

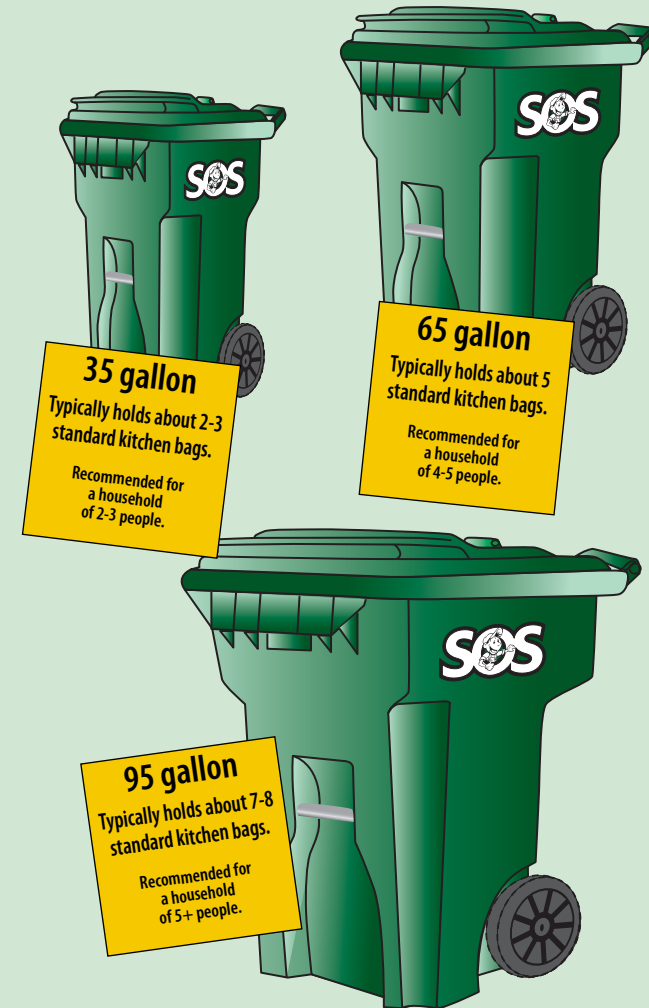
Additional pickup service

If you have extra trash that will not fit into your trash cart, be sure to call our office prior to your regular scheduled pickup service. Place it into a plastic bag and set 5 feet from your cart allowing clearance for the mechanical arm of the collection truck. Your driver will then pick up the "extra" and your account will be charged accordingly.



Available Cart sizes

Need to increase or decrease your cart size?
We can help, just give us a call!



Southern Oregon Sanitation offers residential and worksite drop box containers.

These rentals can be delivered to you in a variety of sizes.

Josephine & Jackson County Service Areas

- 5 yard
- 8 yard
- 10 yard
- 20 yard
- 30 yard

Douglas County Service Areas

- 20 yard
- 30 yard



Some restrictions apply.
Call for details.

The curbside trash carts are loaned to our customers. If lost or stolen, you may be required to pay a deposit.